

How to use the [] and \ keys with PET/SPECT/CT

Special Use Keys

Using the [] and \ keys

Sometimes you will need to quickly change your multimodality display from all PET for example to a 50/50 blend of PET/CT and then back to all CT.

The [] and \ keys will let you do this.

If for example your standard default view in your template has a 50/50 mix of PET and CT, use the [key to display the view with only the PET showing.

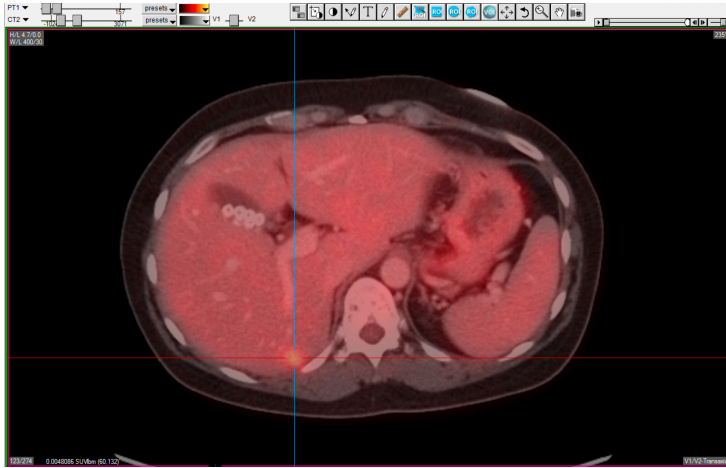
Use the] key to display the view with only the CT showing.

Use the \ key to display a 50/50 mix of PET and CT.

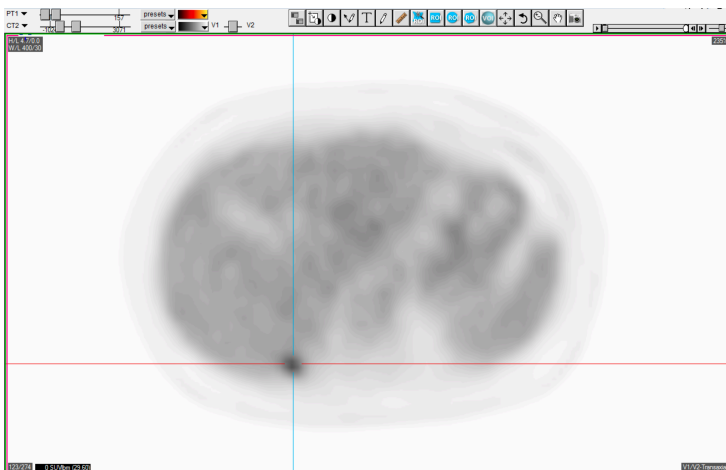
These keyboard shortcuts work with any two modalities, including SPECT/CT and PET/MR.

See examples on the next page.

The image below has the \ key applied.



The image below has the [key applied.



The image below has the] key applied.

